

For Sale
6447 Westminster Drive,
London, Ontario

GLEED



6447 Westminster Drive,
London, Ontario

For Sale:
\$2,200,000

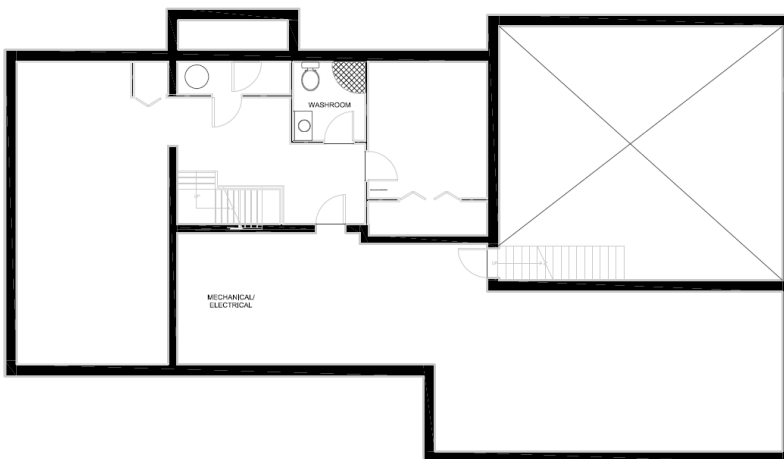
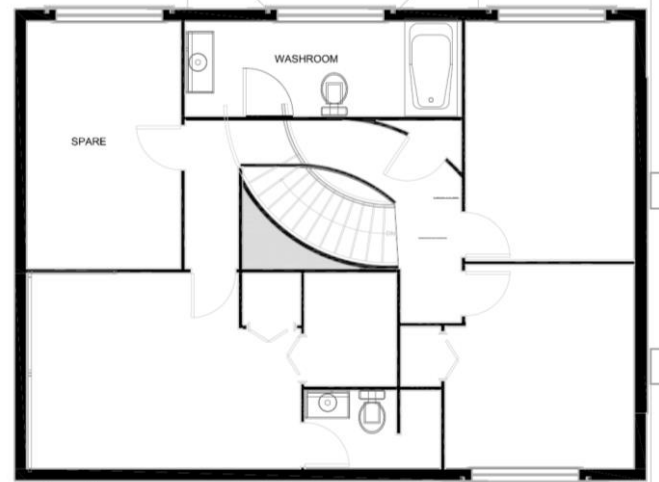
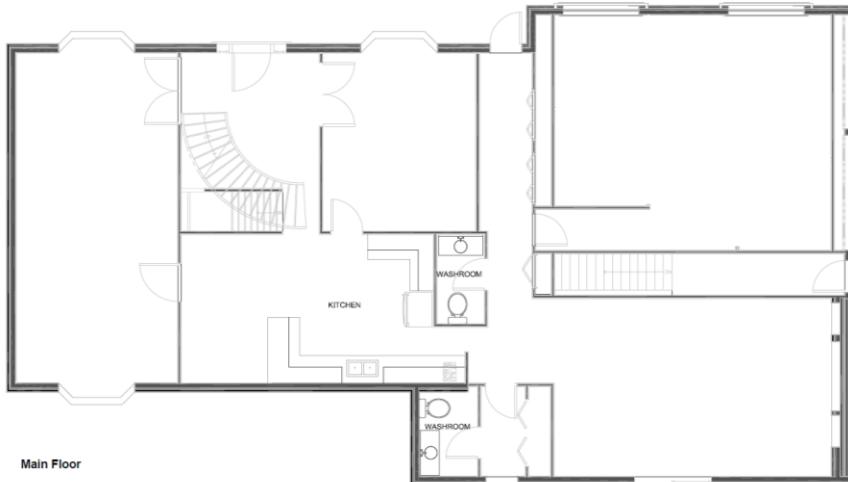
- 3,500 sq ft (+/-) Country Estate on 9.003 acres
- Located on Westminster Drive between Colonel Talbot Road and Wonderland Road South
- Zoning: AG2, which allows for:
 - Farm Dwelling
 - Kennels
 - Agricultural uses and more

RICHARD GLEED
Broker of Record/President
rick@gleedcommercial.com
519.518.8080

MEGAN GLEED
Sales Representative
megan@gleedcommercial.com
519.518.8080

For Sale
6447 Westminster Drive
London, Ontario

GLEED



Property Details:

- Easy access to Hwy 402
- Property Taxes: \$8,690.65 (2021)
- Two storey, center hall plan
- Converted garage
- 1200 sq ft outbuilding with 2 furnaces, a/c and 100 amp panel
- Seller will lease-back until May 2023

RICHARD GLEED
Broker of Record/President
rick@gleedcommercial.com
519.518.8080

MEGAN GLEED
Sales Representative
megan@gleedcommercial.com
519.518.8080