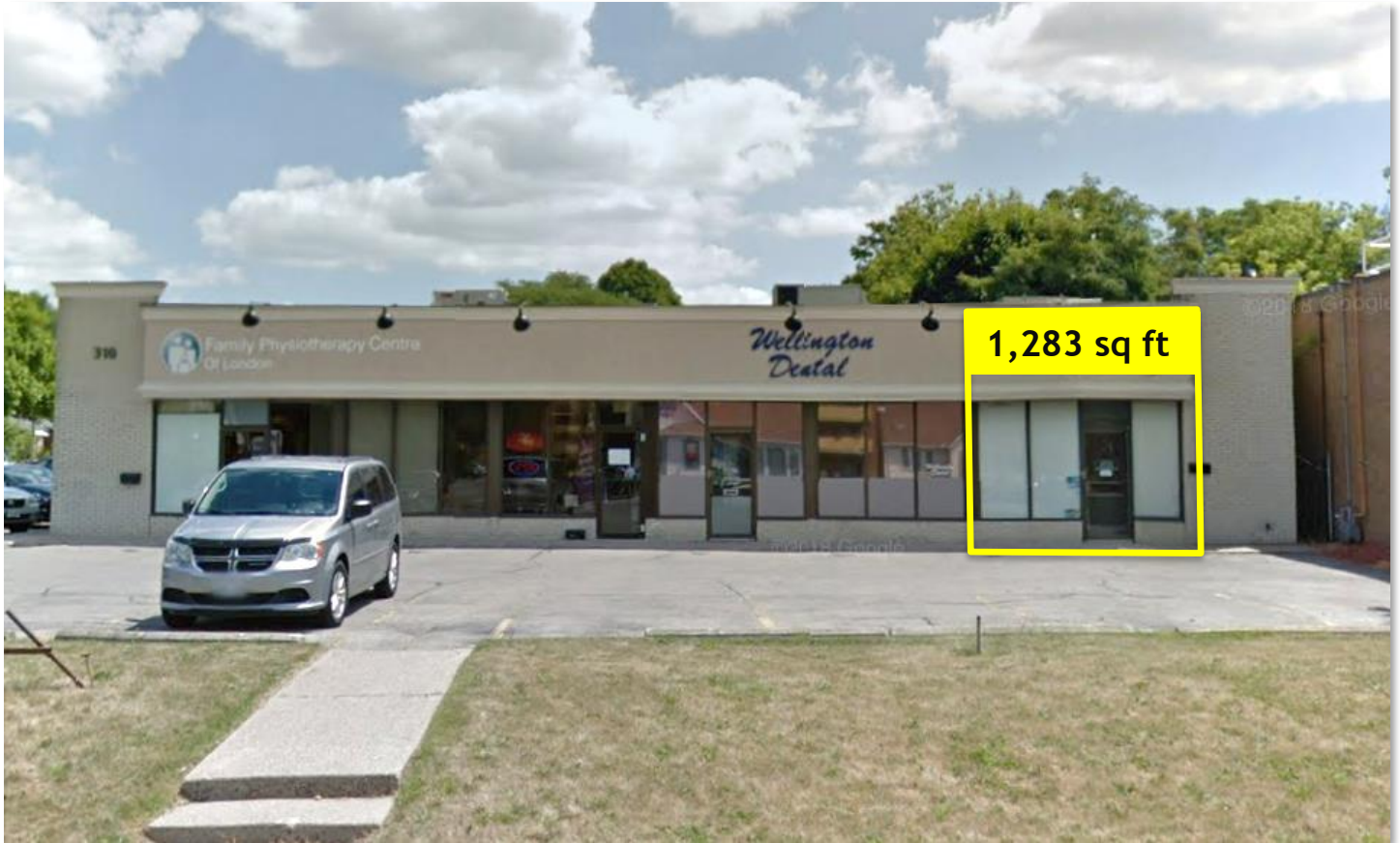


For Lease
310 Wellington Road
London, Ontario

GLEED



- Prime location with great exterior visibility
- Located at the corner of Wellington Road and Chester Street, one block north of Baseline Road
- 1,283 sq ft (+/-) of finished office or retail space
- Large picture windows provide lots of natural light
- Pylon and sign band opportunities available
- Zoning: CS6, permitted uses include:
 - Medical/Dental
 - Clinic
 - Personal Services
 - Office
 - Financial

Lease rate:
\$22.00 per sq ft net
Additional rent:
\$10.50 per sq ft

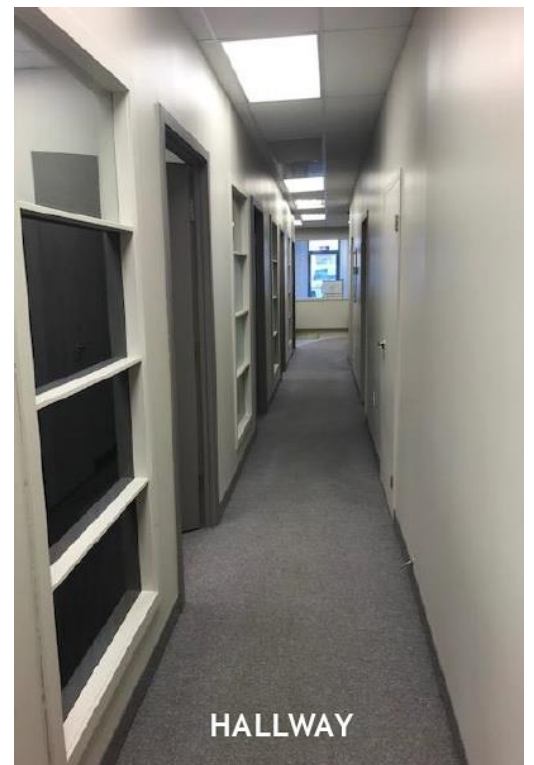
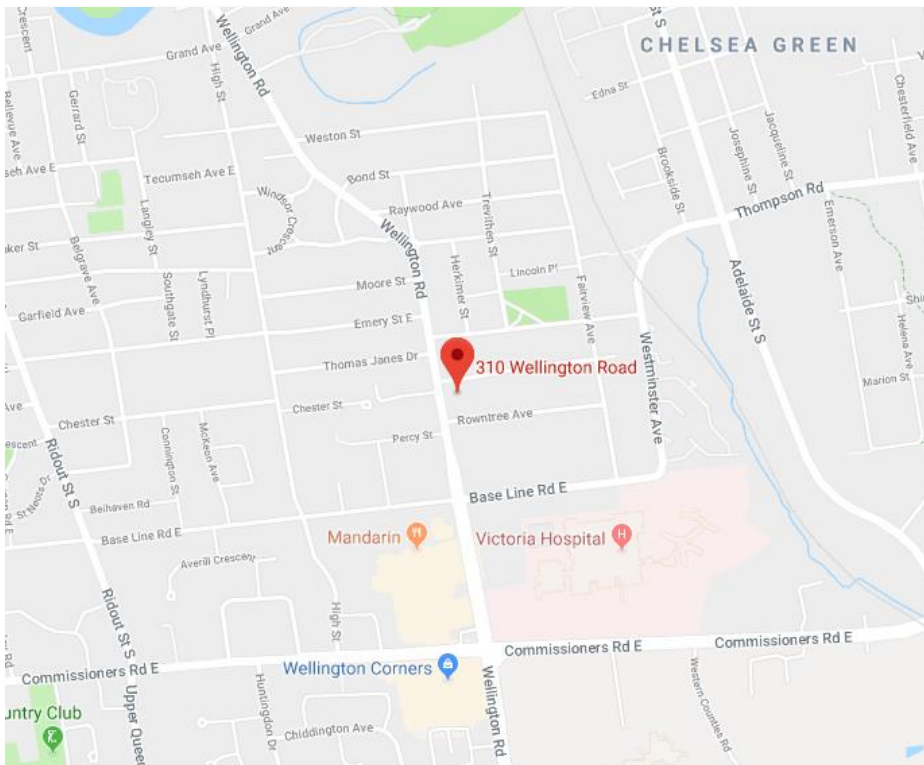
MEGAN GLEED
Sales Representative
megan@gleedcommercial.com
519.518.8080

GLEED Inc., Real Estate Brokerage
476 Richmond Street | 3rd Floor
London, Ontario N6A 3E6

T 519 518 8080
F 519 518 8081

For Lease
310 Wellington Road
London, Ontario

GLEED



GLEED Inc., Real Estate Brokerage
476 Richmond Street | 3rd Floor
London, Ontario N6A 3E6

T 519 518 8080
F 519 518 8081