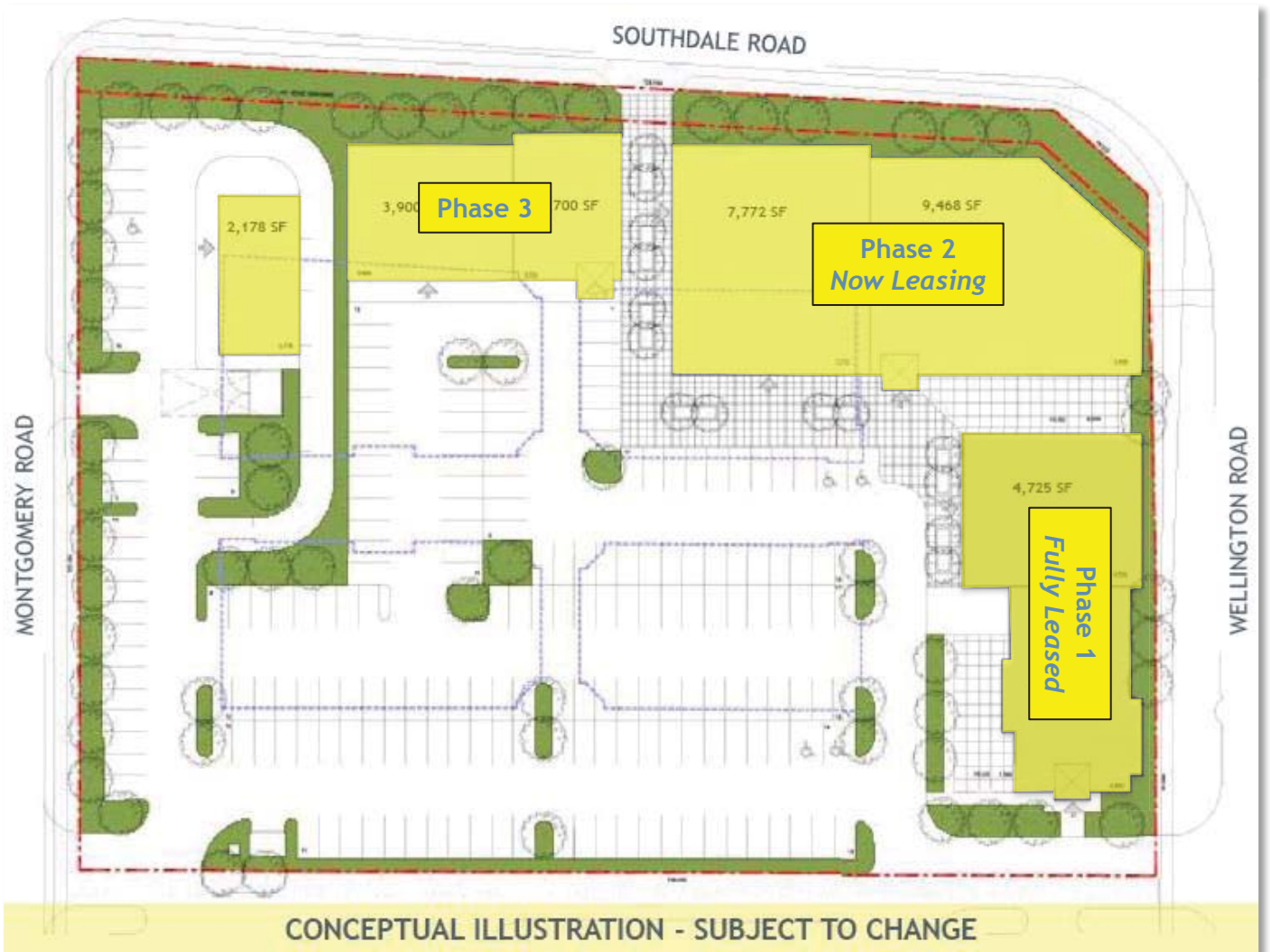


841 Wellington Road
London, Ontario

GLEED

*NEW COMMERCIAL DEVELOPMENT IN THE HEART OF
LONDON'S HOTEL, RETAIL AND RESTAURANT CORRIDOR*



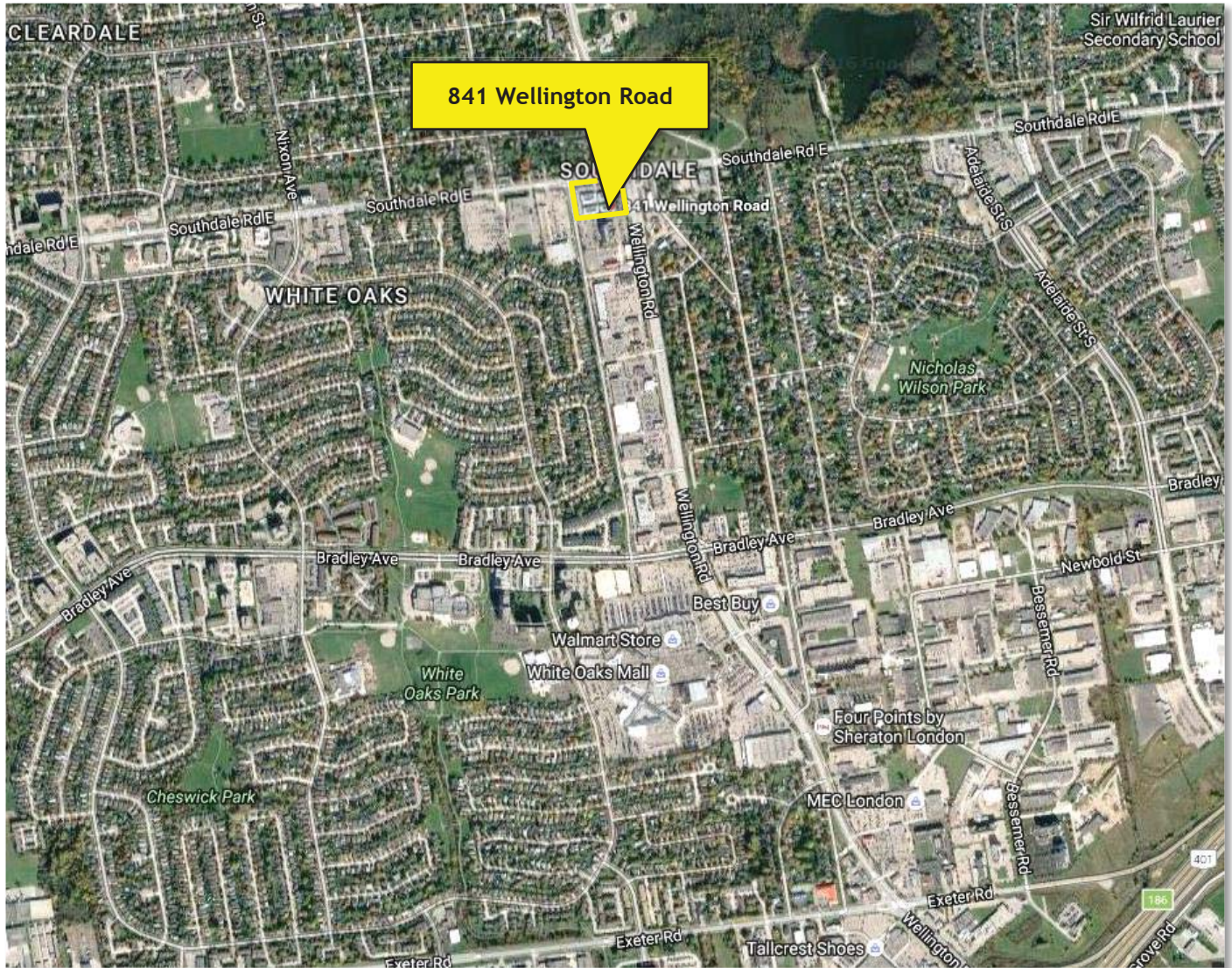
PHASE 2: NOW LEASING

GLEED Inc., Real Estate Brokerage
476 Richmond Street | 3rd Floor
London, Ontario N6A 3E6

T 519 518 8080
F 519 518 8081

841 Wellington Road London, Ontario

GLEED



Traffic Volume (vehicles per day):

Wellington Road:	37,000
Southdale Road:	24,500
Montgomery Road:	7,500

RICHARD GLEED

Broker of Record/President
rick@gleedcommercial.com
519.518.8080

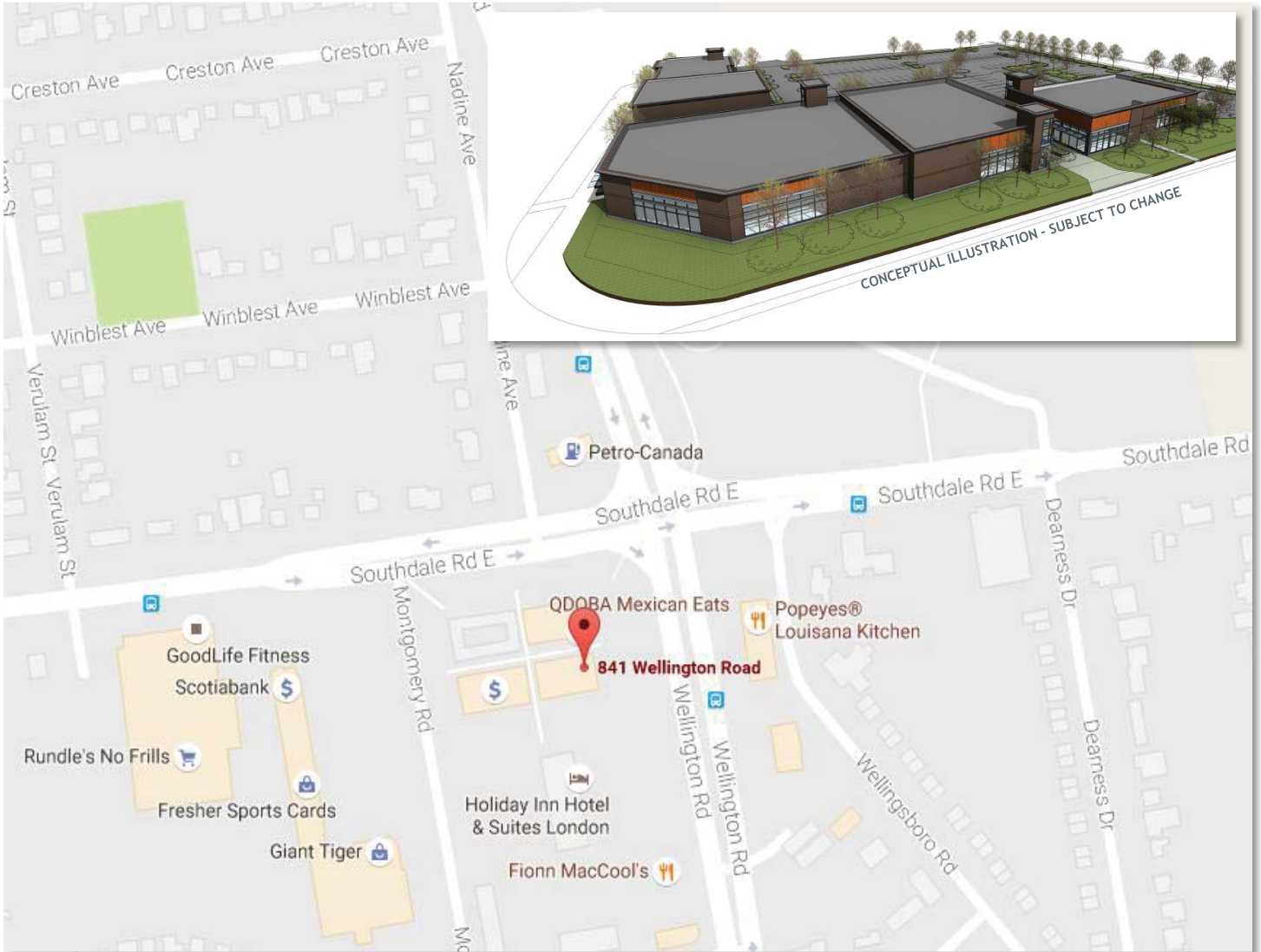
MEGAN GLEED

Sales Representative
megan@gleedcommercial.com
519.518.8080

GLEED Inc., Real Estate Brokerage
476 Richmond Street | 3rd Floor
London, Ontario N6A 3E6

841 Wellington Road
London, Ontario

GLEED



1,000 - 10,000 sq ft units available:

- Restaurant
- Medical / Dental
- Personal Service
- Office
- Retail

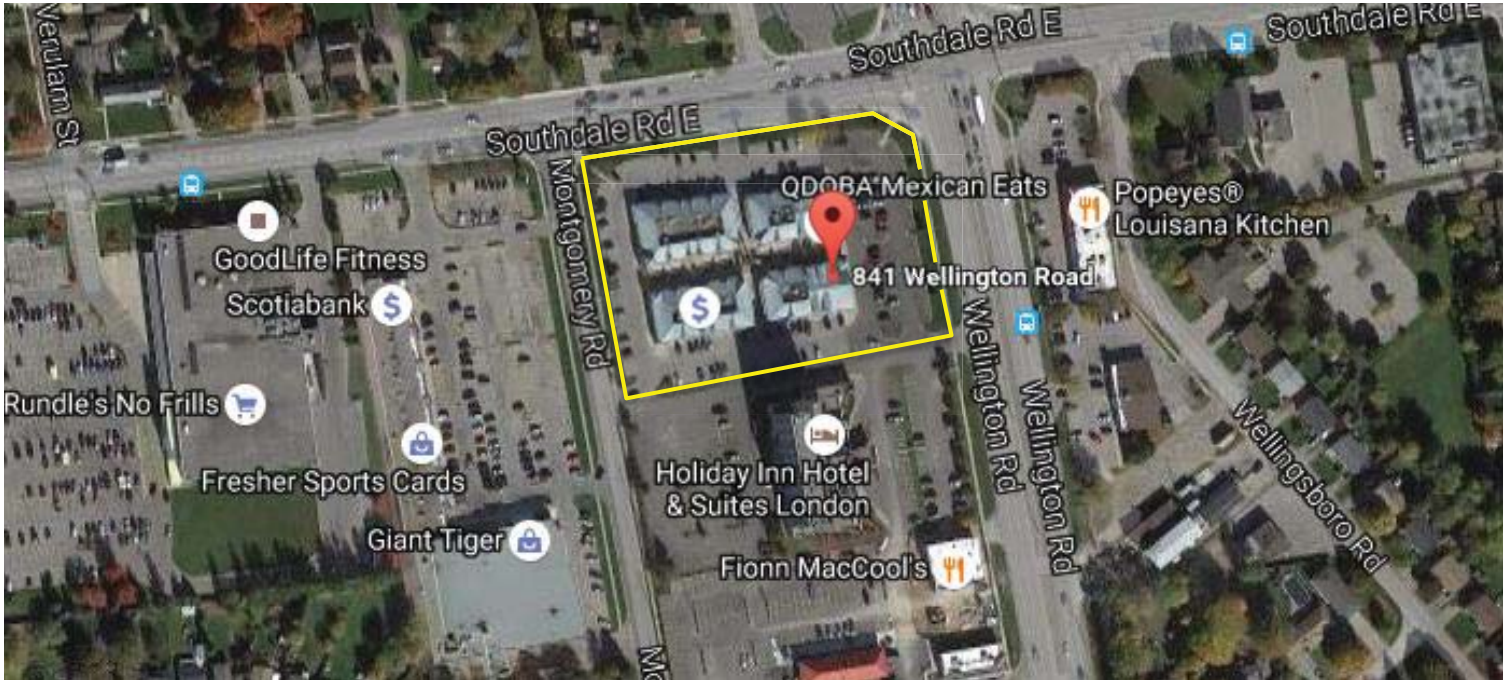
RICHARD GLEED
Broker of Record/President
rick@gleedcommercial.com
519.518.8080

MEGAN GLEED
Sales Representative
megan@gleedcommercial.com
519.518.8080

GLEED Inc., Real Estate Brokerage
476 Richmond Street | 3rd Floor
London, Ontario N6A 3E6

841 Wellington Road
London, Ontario

GLEED



Property Summary

Available Space:	Up to 40,000 SF	Land Area:	142,933 SF
Net Lease Rate:	\$34.00 psf	Zoning:	ASA 1,2,3
Additional Rent:	TBD	Parking:	200 spaces

Features

- Brand new commercial development with Phase 1 occupancy in 2019
- Corner exposure with large storefront windows on three sides
- Pylon signage available on Wellington Road, Southdale Road and Montgomery Road
- Close proximity to White Oaks Mall and Highway 401 access
- Wellington Road designated as Rapid Transit Corridor

GLEED Inc., Real Estate Brokerage
476 Richmond Street | 3rd Floor
London, Ontario N6A 3E6